

Uniclass Pr_35_57_11_26
CI/SfB (71.3) X

BARRIER MATTING SYSTEMS

PRIMARY, HYBRID AND SECONDARY MATTING



GRADUS

GRADUS

Our products are installed in prestigious buildings in both UK and International markets. With customers ranging from designers & architects to contractors and building owners and with clients such as Marks & Spencer, Virgin and BMW you can trust Gradus to provide products that work.



The Gherkin, London, England



Wembley Stadium, London, England



Hong Kong International Airport



Marina Bay Sands Resort, Singapore



Royal Caribbean Cruise Ship



The Christie, Manchester, England



Burj Al Arab, Dubai, UAE



Eiffel Tower, Paris, France

Why Gradus

Gradus offers an extensive range of barrier matting systems, providing an effective barrier against dirt and moisture at entrances, access points and circulation areas.

Correct specification helps to reduce slip accidents, increase the life cycle of surrounding floorcoverings and reduce cleaning and maintenance costs.

All our products are designed to ensure the correct balance between safety, performance and aesthetics and are suitable for a wide variety of contract applications.

Services

The Gradus Knowledge:

CPD - Gradus offers comprehensive RIBA assessed CPD seminars covering specification, legislation, safety, performance and aesthetics.

Seminar - An informal opportunity for Gradus to bring an exhibition of products directly to you. Flexible and informative, they can be arranged at a date and time to suit you. See page 73 for more information.

Project Management & Installation

A full project management and on-site installation service for primary entrance matting. See page 65 for more information.

Website

Visit www.gradus.com to access all of our products and services.

5 Day Manufacturing Service

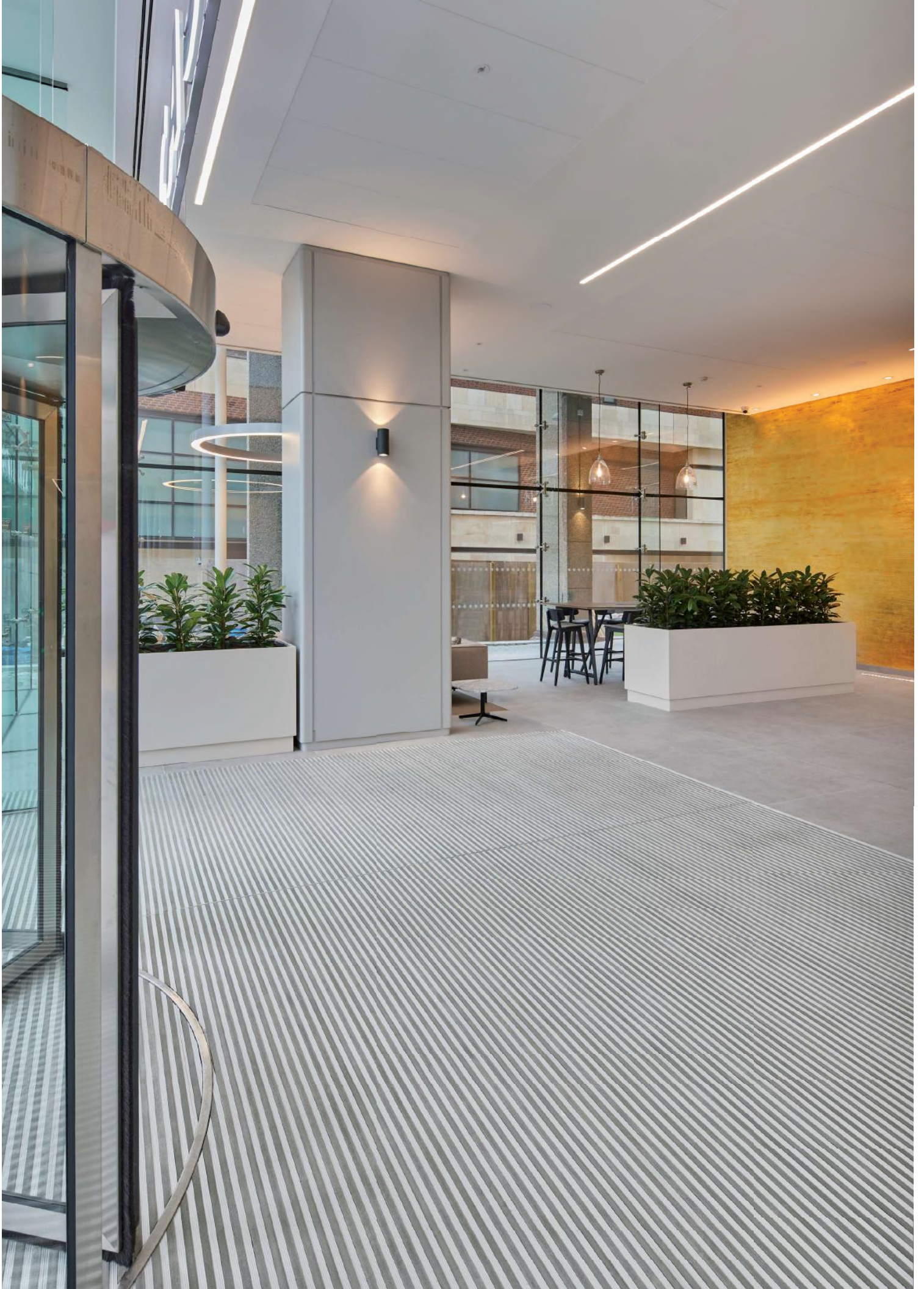
Available for Esplanade 9000, Esplanade 8500, Esplanade 6000, Esplanade 5000, Esplanade 1500, Esplanade 1000, Topguard, Topguard Plain, Tyreguard, Access 6000, Access 5000, Mat-in-a-Box 6000 & Mat-in-a-Box 5000 on all orders up to 20m². T&Cs apply see page 64.

Samples

Call Gradus or build a design board online and get all the samples you need within 24 hours.

Tel: 01625 428922
or email: imail@gradus.com





Quality

- All matting products are warranted against material and manufacturing defects under normal use and service, subject to materials being installed and maintained to Gradus recommendations. Warranty details can be found on individual product pages and on the charts on pages 16-17, 36-37 and 44-45. Additional terms & conditions apply - details available upon request.
- ISO 9001 Quality Management accredited company
- ISO 45001 Occupational Health & Safety

Design

- Safety: matting helps to reduce slips, trips and falls caused by wet flooring in line with the latest guidelines
- Performance: extensive research and testing ensures durability and appearance retention throughout a product's life
- Aesthetics: primary barrier mats can be manufactured to shapes and sizes to complement floor plans of entrances to buildings
- In-house product design and development

Sustainability

- ISO 14001 Environmental Management accredited company
- Our pledge is 'To meet our present business needs without compromising our long term future'
- We have a firm set of environmental objectives allowing us to focus on raw material selection, legislation, waste reduction, training and recycling



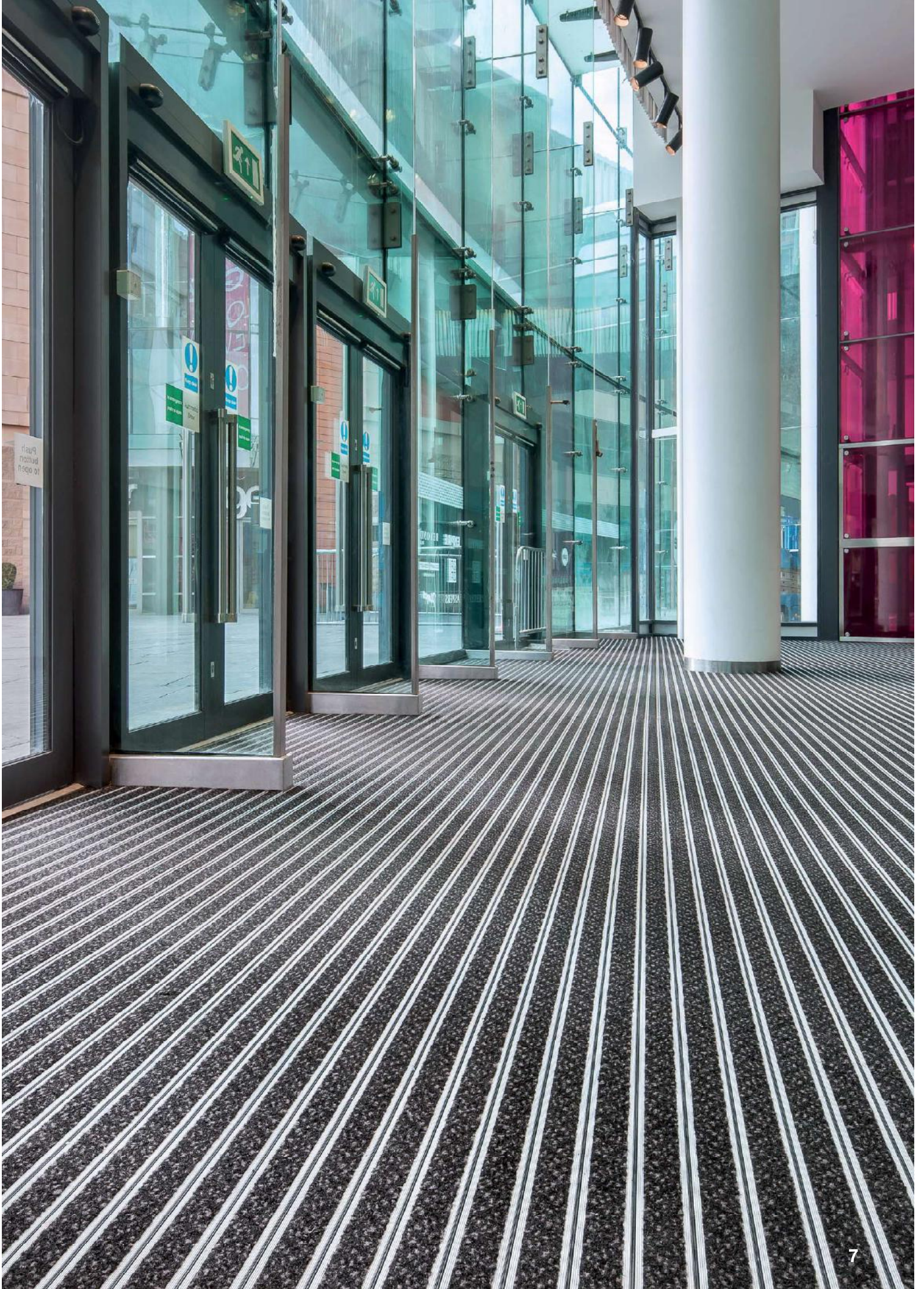
REACH

- REACH stands for Registration, Evaluation, Authorisation and Restriction of Chemicals. As of 1 January 2021 the UK REACH and the EU REACH regulations operate independently from each other.
- Gradus products do not contain any substances currently classified as Substances of Very High Concern (SVHC) at a concentration greater than 0.1% as declared against both the EU and UK Candidate Lists.
- If you have any specific concerns regarding the composition of a particular product, contact Gradus Technical Support.

Knowledge

- Member of the Contract Flooring Association (CFA)
- Registered member of the RIBA CPD Providers Network
- Technical Support
- Member of NBS Plus
- Network of trained specification consultants





Why use Barrier Matting

Increase Public Safety



According to the Health & Safety Executive, 90% of slip accidents in public buildings occur on wet floors.

An effective matting system can reduce the amount of dirt and moisture tracked into a building by up to 90%, helping to reduce such slip accidents.

Remove Dirt & Moisture



More than 70% of dirt and moisture in buildings is tracked in by pedestrian and wheeled traffic.

An effective matting system removes and retains dirt and moisture, improving the appearance of internal floorcoverings and preventing unnecessary replacements.

Reduce Maintenance Costs



On-going cleaning & maintenance is the largest cost in the lifecycle of any floorcovering. An effective entrance mat will reduce the amount of dirt that is tracked into a building therefore reducing maintenance costs and increasing the life of a building's floorcoverings.

ECONYL[®]
ENDLESS POSSIBILITIES

ECONYL[®] Regenerated Solution Dyed Nylon is produced using nylon waste which is recovered from oceans and from landfill. Waste such as fishing nets, fabric scraps, carpet and industrial plastic is recovered, sorted and cleaned. Through a regeneration and purification process, the nylon waste is recycled back into its original purity. ECONYL[®] Regenerated Solution Dyed Nylon is processed into carpet yarn and used to manufacture several of our matting ranges.

Choosing the Correct Barrier Matting

Step 1

Application

Volume & Type of Traffic

The volume of foot traffic as well as both the frequency and load weight of wheeled traffic will determine the type of mat required.

Foot Traffic



Heavy

More than 5,000 crossings per day

Examples - railway station, stadiums, airports, shopping centres, large hospitals, supermarkets & department stores



Medium

More than 500 crossings per day

Examples - offices, hospitals, schools, high street shops & hotels

Typical types of wheeled traffic



Severe
(250kg)



Forklift Truck



Cherry Picker



Heavy
(150kg)



Pallet Truck



Retail Cage

Note:
Illustrations are guidelines only. See product selection guide on pages 16-17 for further information



Medium
(100kg)



Shopping Trolley



Box Truck



Baggage Trolley



Light
(50kg)



Shopping Trolley



Suitcase



Wheelchair

The weights shown are per wheel. See notes on product selection guide on page 16 for more information.

Other factors to consider:

- Consider the environment immediately outside the building as this can affect the type, length (going) and performance of mat you select e.g. adjacent to turf area, exposed entrance, entrance protected by canopy etc.
- Different entrances in a building may have different types and volumes of traffic, therefore more than one matting solution may be required in a building e.g. main and secondary entrances or main and service entrances.
- When specifying aluminium entrance mats consideration should be given to the type and amount of lighting and/or glass atriums as this may lead to visual distortion or strobing in certain circumstances. To minimise this effect avoid combining silver or mill finish aluminium with dark wipers. In some circumstances, black anodised aluminium and black wipers can be combined to minimise this effect.

Step 2

Type & Performance of Matting

Type of Matting - Primary, Hybrid or Secondary

Primary Barrier Matting - the first point of contact, used both externally and internally dependent on mat type and application. Available in a choice of heights to suit matwell depth or for surface mounting. (See zones 1 & 2 on pages 12-13 for more information). Primary barrier matting is usually supplied as a made to measure solution.

Hybrid Barrier Matting - the first point of contact used internally. Available in a choice of heights to suit matwell depth or for surface mounting. (See zone 2 on page 13 for more information). Hybrid barrier matting is easy to install and usually cut to fit on-site.

Secondary Barrier Matting - is made from high performance textiles and is often used in conjunction with a primary or hybrid mat to provide additional performance. Secondary barrier matting can be used as a stand-alone solution in some circumstances as well as in other areas of a building such as circulation areas. (See zones 3 & 4 on pages 12-13 for more information)

Type of Matting - Open or Closed Construction

Open Construction - (Fig.1) incorporates spaces allowing dirt and moisture to fall through in to the matwell below which can be lifted intermittently to remove the debris as well as for deep cleaning the mat itself.

Closed Construction - (Fig.2) dirt and moisture remain on the surface of the mat and can be removed by regular cleaning in addition to periodic deep cleaning of the mat itself.

Open Construction

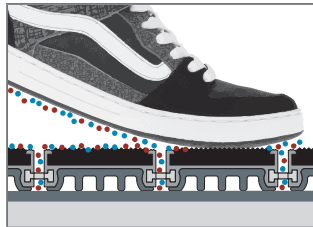


Fig.1 - Linking strips are interspersed with holes

Closed Construction

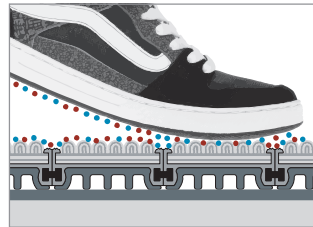


Fig.2

Performance of Matting - Wiper Options

The type and amount of wiper material will affect the level of dirt and moisture that is removed from foot and wheeled traffic.

Moisture & Dirt Removal



High



Medium

Wiper Options

Double Wiper Configuration

Esplanade 9000, Esplanade 8500, Topguard, Topguard FR & Tyreguard

Single Wiper Configuration

Esplanade 6000, Esplanade 5000, Access 6000, Access 5000, Mat-in-a-Box 6000 & Mat-in-a-Box 5000

Single Wiper Configuration

Esplanade 9000, Esplanade 8500, Topguard, Topguard FR, Tyreguard, Esplanade 1500, Esplanade 1000 & Mat-in-a-Box 1550

Note: Plain / pvc wipers provide a scraping action only.
See product selection chart on pages 16-17 and individual product pages for further information.

Step 3

Amount of Matting

Width and length of matting

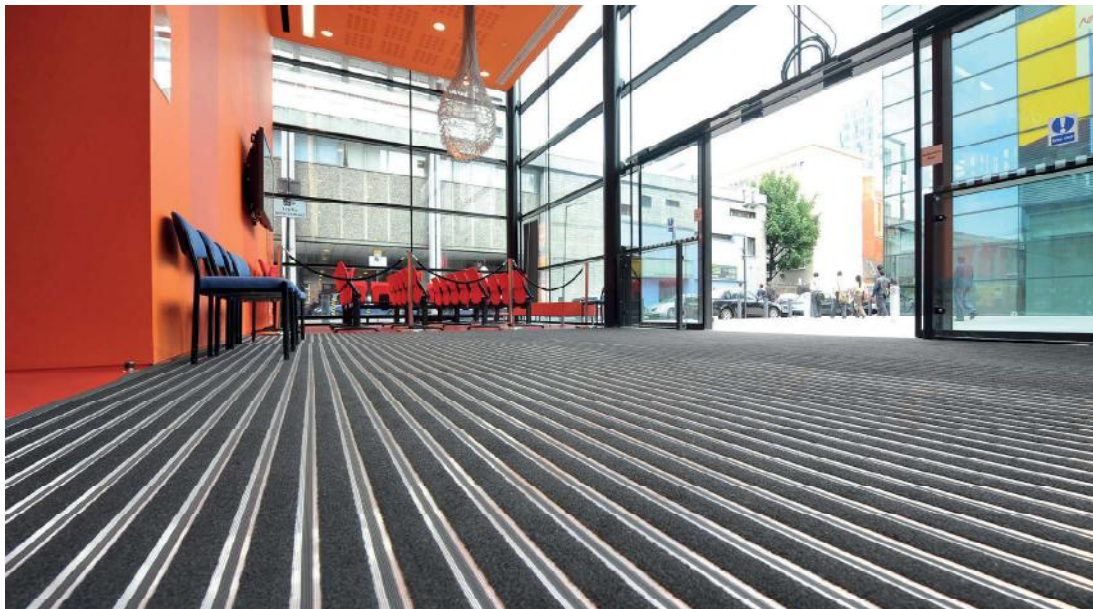
Width - matting should cover the entire entrance of a building, including side entrances so that traffic cannot enter without passing over the mat.

Length (Going) - critical to the function of the mat the length will vary dependent on volume of traffic crossing the mat along with consideration to peak times of traffic flow.

HSL (Health & Safety Laboratory) and EFSA (Entrance Flooring Systems Association) have provided the following guidance based on peak flow rates per hour. For more information see page 66.

Applications	People Per Hour	Minimum Length
Low	78	3-4 metres
Medium	400	6-7 metres
High	800	8-10 metres

Note: It is not always possible to fit the correct amount of primary barrier matting - in these circumstances extending the amount of matting by using a secondary barrier mat will provide an ideal solution.



For more information on specifying the correct entrance barrier mat and for information on the guidance contained in Building Standards and British Standards please refer to specification guidelines on pages 66-71.

Gradus are able to provide a full consultation and advice service on selecting the correct barrier matting system - please call Technical Support on **01625 428922** to arrange a face to face meeting with a specification expert.

Where to use Barrier Matting

An effective barrier matting system, when correctly specified, will help to minimise the risk of slip accidents caused by wet flooring and lower maintenance costs by significantly reducing the amount of dirt and moisture tracked into a building. Barrier matting can not only be used at a building's entrance and access points but also in other areas that are subject to increased risk of soiling and heavy wear. In many cases the optimum performance is achieved by combining different types of barrier matting.

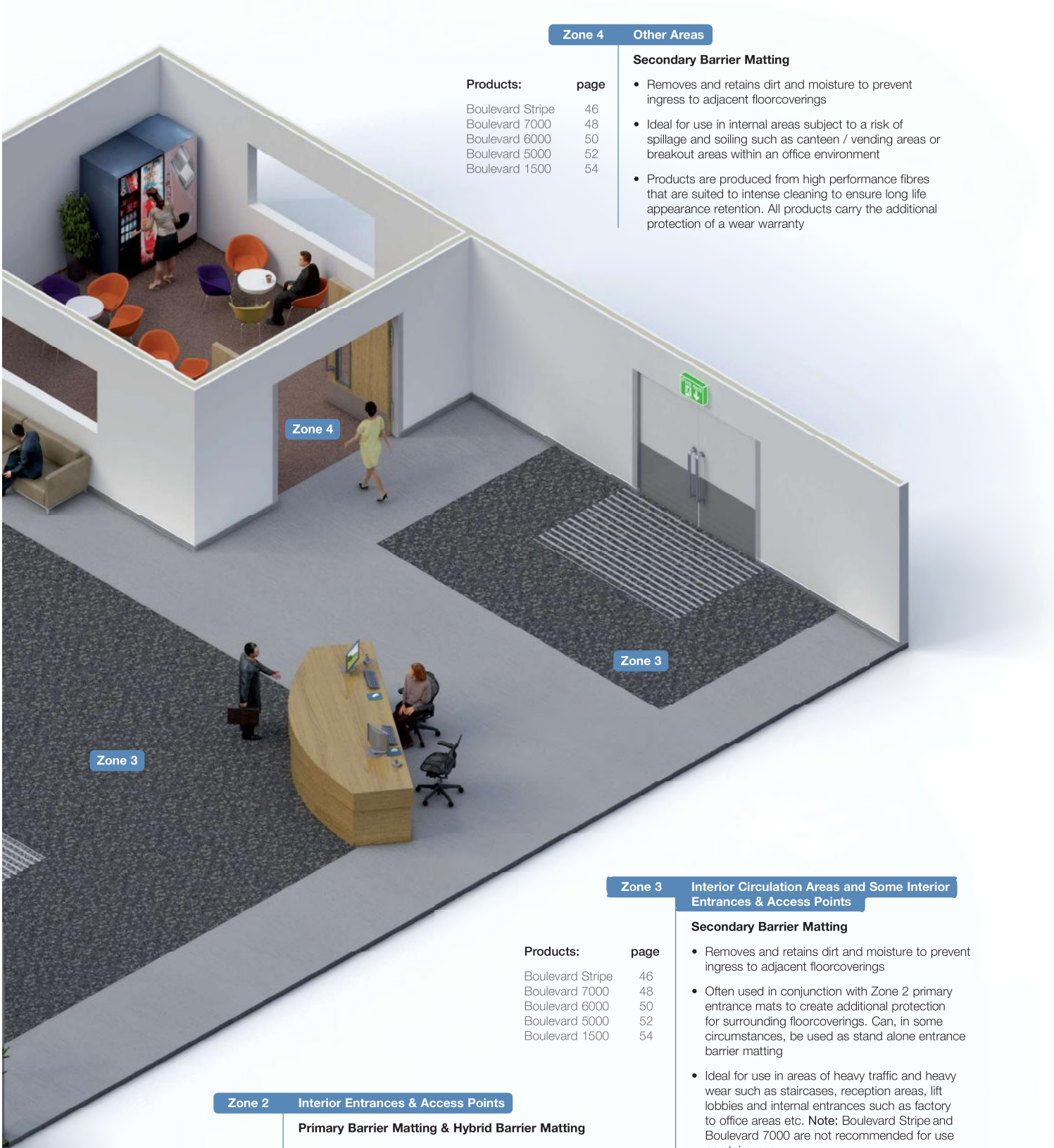
The illustration below is designed to act as a guide to show some of the areas of a building that are at risk. These are divided into zones, which are referred to throughout the catalogue.



Zone 1 Exterior Entrances & Access Points

Primary Barrier Matting

Products:	page	
Esplanade 9000	18	• Removes excess dirt prior to entering a building using a scraper wiper
Esplanade 8500	20	• Increases the effectiveness of internal primary, hybrid and secondary matting
Esplanade 6000	22	• Ideal in heavy traffic areas
Esplanade 5000	24	
Esplanade 1500	26	
Esplanade 1000	28	
Topguard	30	



Zone 4 Other Areas

Products:	page
Boulevard Stripe	46
Boulevard 7000	48
Boulevard 6000	50
Boulevard 5000	52
Boulevard 1500	54

Secondary Barrier Matting

- Removes and retains dirt and moisture to prevent ingress to adjacent floorcoverings
- Ideal for use in internal areas subject to a risk of spillage and soiling such as canteen / vending areas or breakout areas within an office environment
- Products are produced from high performance fibres that are suited to intense cleaning to ensure long life appearance retention. All products carry the additional protection of a wear warranty

Zone 4

Zone 3

Zone 3

Zone 3 Interior Circulation Areas and Some Interior Entrances & Access Points

Products:	page
Boulevard Stripe	46
Boulevard 7000	48
Boulevard 6000	50
Boulevard 5000	52
Boulevard 1500	54

Secondary Barrier Matting

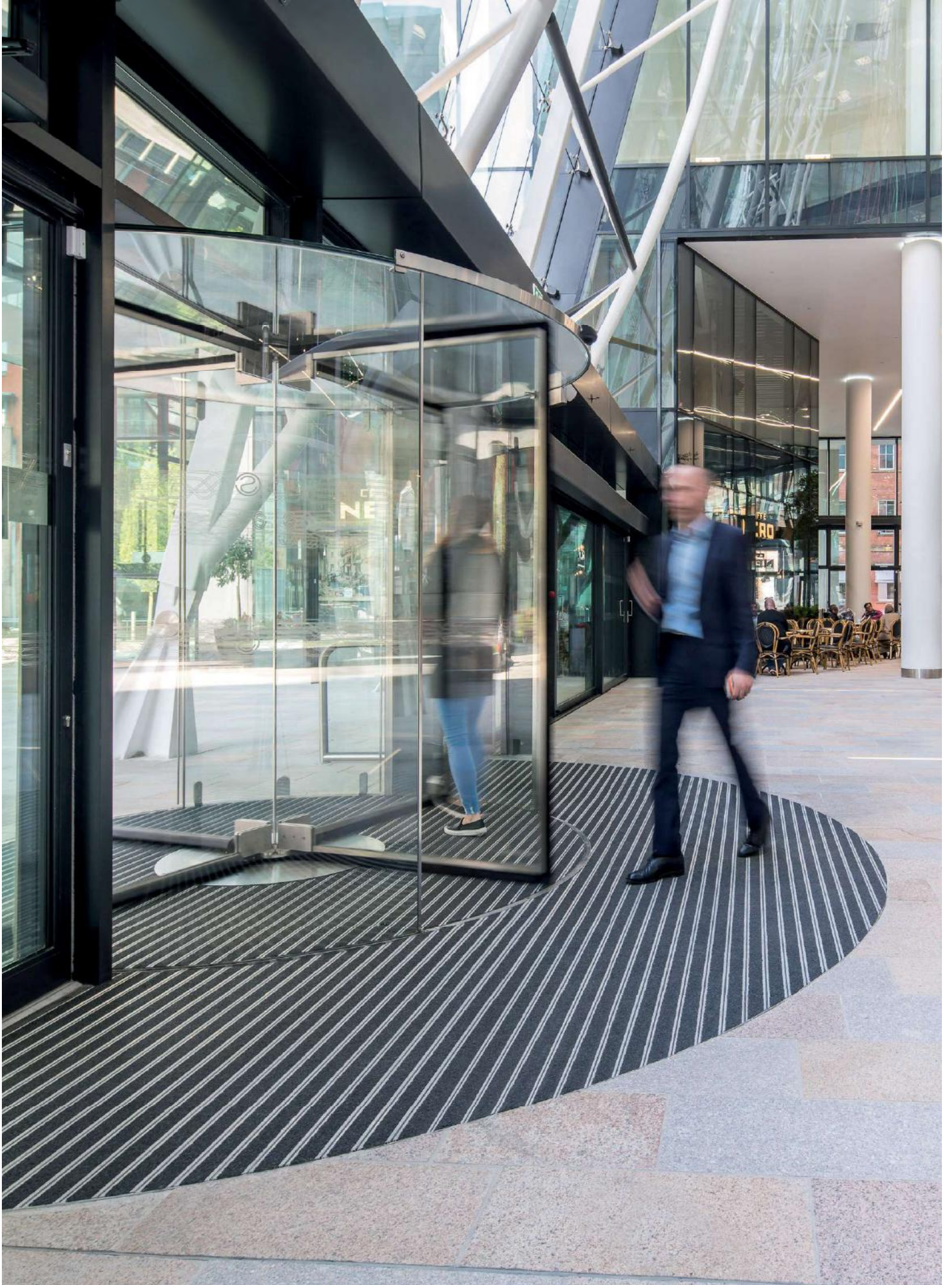
- Removes and retains dirt and moisture to prevent ingress to adjacent floorcoverings
- Often used in conjunction with Zone 2 primary entrance mats to create additional protection for surrounding floorcoverings. Can, in some circumstances, be used as stand alone entrance barrier matting
- Ideal for use in areas of heavy traffic and heavy wear such as staircases, reception areas, lift lobbies and internal entrances such as factory to office areas etc. **Note:** Boulevard Stripe and Boulevard 7000 are not recommended for use on staircases
- Offers excellent appearance retention properties when cleaned in accordance with Gradus recommended cleaning methods. All products carry the additional protection of a wear warranty
- Boulevard 6000 & Boulevard 5000 are available in a choice of broadloom or tile options

Zone 2 Interior Entrances & Access Points

Products:	page
Esplanade 9000	18
Esplanade 8500	20
Esplanade 6000	22
Esplanade 5000	24
Esplanade 1500	26
Esplanade 1000	28
Topguard	30
Topguard FR	32
Tyreguard	34
Access 6000 & 5000	38
Mat-in-a-Box 6000 & 5000	40
Mat-in-a-Box 1550	42

Primary Barrier Matting & Hybrid Barrier Matting

- Removes and retains dirt and moisture to prevent ingress to adjacent floorcoverings through a combination of scraper and textile wipers
- Available with a choice of wipers that offer excellent appearance retention when cleaned in accordance with Gradus recommendations
- Available in a choice of open and closed construction and in different gauges to suit both recessed and surface mounted options
- Available to suit varying types and volumes of traffic



Primary Barrier Matting

A collection of barrier matting products ideal for use at both internal and external entrance and access points. Products are available in a choice of formats to suit varying types and volumes of traffic.



Gradus offer a full project management and on-site installation service for all primary entrance mats. Full details can be found on page 65



Most primary matting products are available on a 5 day manufacturing service for orders up to 20m². Full details can be found on page 64

Primary barrier matting is often used in conjunction with a secondary barrier mat to provide a total matting solution.

Esplanade 1000



Zones 1 & 2:

Exterior & Interior Entrances & Access Points

Esplanade 1000 is constructed from either ECONYL® regenerated solution dyed nylon wipers or black pvc scraper wipers which are supported with an aluminium base. The ECONYL® regenerated solution dyed nylon wipers are available in a choice of 4 colours and provide soil and moisture retention.

For a complete matting solution Esplanade 1000 can be combined with Boulevard secondary barrier matting.

Typical applications:

Schools, offices & high street shops



Product Information

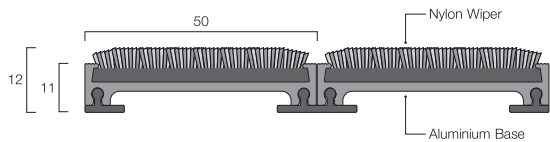
See primary matting product selection guide - **pages 16-17**



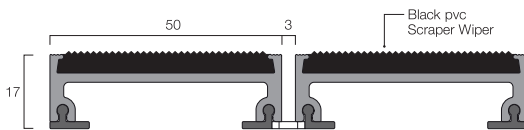
Note - pvc wiper - scraper action only - for exterior use.

- Available in open or closed construction
- Supplied with edging strips and divider bars (see page 57)
- Flammability - BS EN 13501-1 Class Efl
- Slip-resistance (HSL ramp test) - low risk of slip
- Can be manufactured to most shapes on approval of a template
- Warranty - 5 years

12mm closed construction - solution dyed nylon wiper



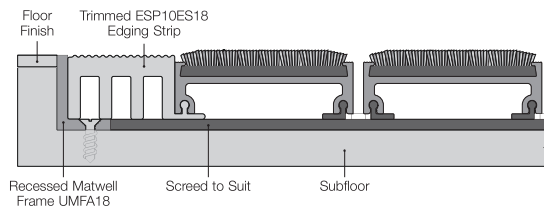
18mm open construction - pvc scraper wiper



Configuration examples for all products visit www.gradus.com.
Profiles: Dimensions shown are nominal. Illustrations not to size.
Products subject to minor design alterations without notice.

Typical Installation

Esplanade 1000 18mm open construction with solution dyed nylon wipers. Recessed in a Matwell.



For installation accessories see pages 56-57.
For matwell frames and matting accessories see pages 58-63.

Configurations

Wiper colour options



Closed construction
(shown with Typhoon wipers)



Open construction
(shown with pvc scraper wipers)

