



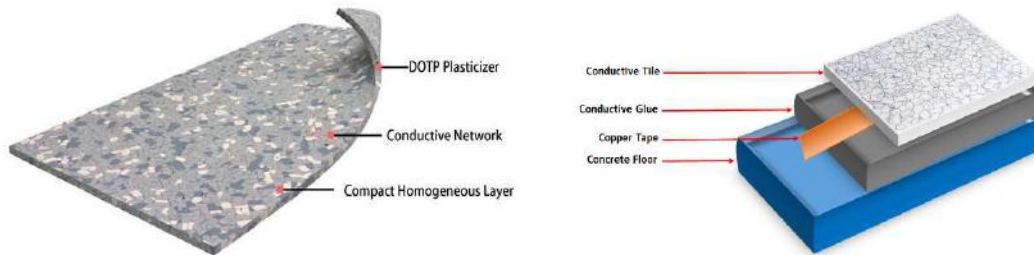
STATIC CONTROL FLOORING

Your Permanent ESD Solution



Special Features & Benefits

- ✓ KurinFlor comply with all ESD control & vinyl materials' standards
- ✓ Assure a permanently conductive performance throughout the life of the product
- ✓ Provide a pore free surface ensuring the highest hygiene properties
- ✓ Create a unique dimensional stability and prevents shrinkage
- ✓ Extremely low emissions and outgassing as the right choice for clean rooms
- ✓ The surface can be fully repaired extending the useful life of the product
- ✓ Provide excellent resistance to meet commercial and industrial usage
- ✓ A good choice for raised access floors used in data centers and server rooms



Grounding

Grounding of copper strip is recommended at every 3m apart and 1 grounding point for every 200-250sqm.

Installation

KurinFlor should be installed on a leveled sub floor, smooth and free of dust, oil, grease, curing agents, parting compounds, surface hardeners, sealers, solvents, old adhesive and other extraneous substances. Moisture test are recommended not exceeding 5lbs./1000sqft/24hrs. Adhesives, tiles, materials, and installation site should be conditioned at operating temperature for 24hrs - 48hrs before installation.

Maintenance

Daily or periodic cleaning recommended to clean floor with machine scrubbing using a good neutral detergent. Soiled floor can be removed with floor cleaning machine, synthetic stripping pad and a commercial stripping solution. Clear water rinsing is necessary after any scrubbing or stripping operation to remove all cleaner residues.



StaticDissipative Tile
Conductive Tile

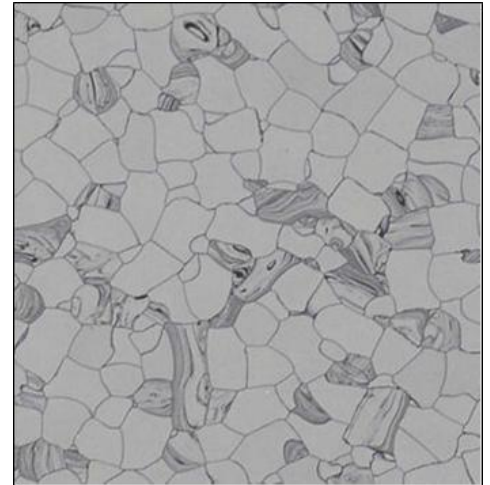


Economy Series

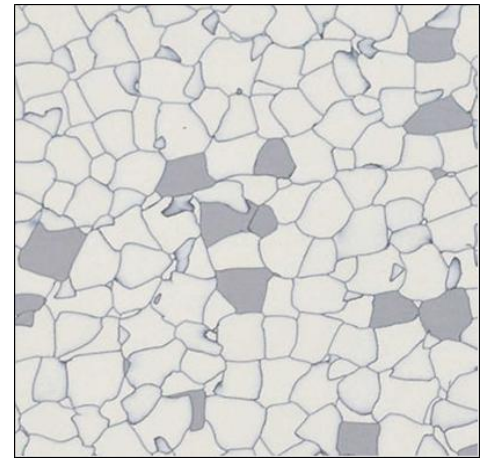
Size : 610 * 610 * 2.0mm



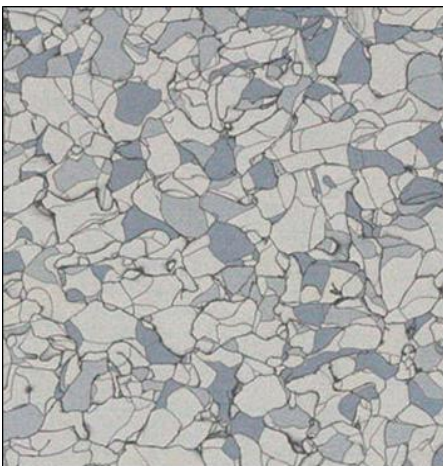
KS9617



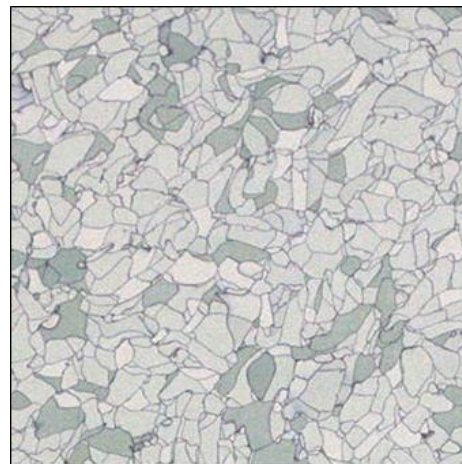
KS9608



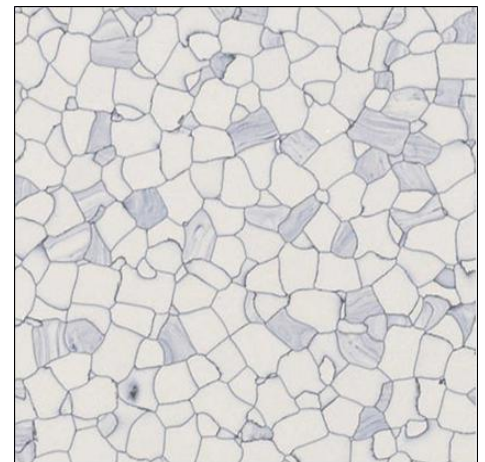
KS9618



KS9619





KS9620



KS9604

Technical Specification



CE Marking	EN 14041	Compliant
ASTM		Compliant
Commercial Very Heavy	ISO 10874 EN 685	34 
Industrial Heavy	ISO 10874 EN 685	43 
Thickness	SJ/T11236-2001 ASTM F386-11 EN428	2.0mm
Size of Tile	SJ/T11236-2001 ASTM F536-98 EN427	610 x 610mm
Dimensional Stability	ISO 23999-2018 ASTM F2199:09 (2014) EN 434	≤0.25%
Residual Indentation	SJ/T11236-2001 ISO 24343-1:2012 EN 433	≤0.15 0.035mm
Wear Resistance	SJ/T11236-2001 EN660-2	≤0.02g/cm ² Wear Group M
Effect to Castor Chair	EN 425	no damage
Slip Resistance	DIN 51130	R9
Electrical Resistance	SJ/T11236-2001 EN 1081 IEC 61340-4-1 ANSI/ESD STM7.1	Conductive : 10 ⁴ - 10 ⁶ Static Dissipative : 10 ⁶ - 10 ⁹
Body Voltage Generation	SJ/T 10694-2006 ESD STM 97.2 (with ESD Shoes)	IVI<100V ≤ 50V
Static Decay	GJB3007A-2009 Federal Method 1018 Method 4046	≤ 2 sec 0.01 sec
Outgassing	IDEMA M11-99	< 1μg/cm ²
TVOC After 28 Days	ISO 16000-9:2006, ISO 16000-6:2011, ISO 16000-3:2011	<10μg/m ³
Toxic Fumes	BS 6853:1999	Pass
Fire Resistance	SJ/T11236-2001 GBB624-2012 ASTM E 648 : 2009a EN13501-1	FV-0 B ₁ (B-S1,t0) Class I B _{fl} -S1
Colour Fastness	ISO 105-B02	≥6
Resistance to Chemical	EN ISO 26987:2012 EN 423	OK