

# Frontrunner SB+



Solid-backed entrance matting with carpet inserts for maximum moisture removal in internal areas.



The superhero of the entrance matting world, Frontrunner SB+ is a low-profile, solid-backed mat that requires no recessed mat well.

Simply roll out, cut to fit and lay within your existing carpet tiles or luxury vinyl tiles – no mat well needed. You can also place directly on your current floor with ramped PVC edges to create a slip-resistant walkway. The mat's etched pattern removes debris and the heavy-duty absorbent inserts dries any moisture, helping to reduce the amount of dirt walked into the building. Wheel-and-heel proof with excellent rolling resistance, it's perfect for commercial buildings and shopping centers with high traffic.



## Features:



Etched pattern



One layer hollow construction



Ribbed vinyl pattern with solid backing



6.5mm grid height



Close mesh grid



## Benefits:



Certified slip resistant  
(DIN 51130: R11,  
ASTM C1028:  
0.6/0.6)



Light to handle



Easy to install, no  
need for recessed  
mat well



Loose lay or adhere  
to subfloor



Wheel-and-heel  
proof



## Plastic Extruders Ltd.

Russell Gardens, Wickford  
Essex, SS11 8DN  
+44 (0) 1268 571 116

UK + USA manufactured  
matting products:  
[plastexmatting.com](http://plastexmatting.com)



# Frontrunner SB+



## Data sheet

### Standard sizes:

Product	Frontrunner SB+
Height	6.5/8mm (1/4"-5/16")
Standard roll options	10 x 1m (33' x 3'3")
Standard module option	1 x 1.5m (3'3" x 4'11")
Weight	6.3 kg/m <sup>2</sup> (1.3lb/sq.ft)

Surface modules are supplied with factory fitted PVC ramped edging to four sides

### Tolerances:

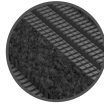
	Height (+/- 0.5mm)	Length (0+0.3m)	Width (0+2cm)
Frontrunner SB+	6.5/8 mm	10 m	100 cm

All dimensions are nominal

### Colours:



Black



Grey

More colours available upon request

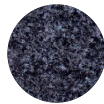
### Carpets:



Black 608



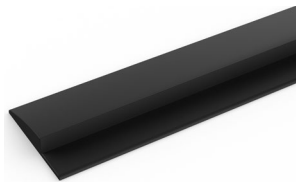
Dark grey 607



Grey 606

### Ancillaries:

#### PVC edging (SB / SB+)



Supplied in rolls of 60m (197") length. One tube of cold welding paste recommended for every 10m of edging. Comes in black and dark grey. Size: 6.5mm x 30mm x 60m (1/4" x 1" x 197")

#### PVC joining strip (SB / SB+)



Can be welded to join rolls end-to-end or side-to-side when doing large installations. Comes in black. Size: 3.5mm x 3.6m (1/8" x 11'9")

### PVC backing technical information:

<b>Acoustic</b>	Excellent sound absorption
<b>Chemical</b>	Resistant to most acids, alkalines and oils. You can read more about specific chemical resistances by <a href="#">downloading this information sheet</a>
<b>Composition</b>	Flexible Polyvinyl Chloride (PVC)
<b>Environment</b>	We don't use any substances included in the SVHC list under REACH in any of our matting products.
<b>Fire</b>	EN ISO 13501-1:2007-Cfl-S1, ASTM E648 – Class 2
<b>Reversion</b>	Thermoplastic shrinkage can result in size reductions up to 2%. This may be accelerated in hot environments. You can read more about the causes of shrinkage by <a href="#">downloading this information sheet</a> .
<b>Rolling resistance</b>	ASTM F 2753: 0.080 in loss of thickness after 1,000 cycles at 500lb
<b>Slip resistance</b>	ASTM E303 Dry/Wet with lines along-lines across 74-95 / 61-74 DIN 51130: R11, V10
<b>Thermal</b>	Designed to function at temperatures from -23°C and up to +60°C. Slight size variation may occur at temperature extremes.
<b>UV light</b>	Resistant to PVC degradation
<b>Warranty</b>	Three years. Visit our <a href="#">policies page</a> for more information about warranties

### Absorbent inserts (Zeno 600 series) technical information:

<b>Wear classification</b>	EN 1307 - 33, Commercial heavy
<b>Pile material</b>	ECONYL®, 100% regenerated polyamide BCF
<b>Tuft base</b>	100% regenerated non woven polyester Colback™
<b>Phthalate Free backing</b>	Waterproof Comfort™ vinyl
<b>Total height</b>	EN 1765 ± 8.7 mm
<b>Pile height</b>	EN 1766 ± 6.7 mm
<b>Total weight</b>	EN 8543 ± 4260 g/m <sup>2</sup>
<b>Pile yarn weight</b>	± 820 g/m <sup>2</sup>
<b>Pile density</b>	± 0,127 g/cm <sup>3</sup>
<b>Fire</b>	EN ISO 13501-1:2007 Cfl-S1
<b>Suitable for castor chairs</b>	EN 985 A, intensive use r=2.8
<b>Colours</b>	10

#### Installation:

Frontrunner SB+'s one-piece construction means installation is simple.

There are two ways to install SB+: adhere or loose lay. For large installations with medium to high traffic, we recommend adhering your mat.

[Watch](#) or [download](#) the installation instructions.

#### Cleaning:

Keeping Frontrunner SB+ looking good is easy:

- Lightweight
- Simply roll or lift to clean
- No special tools needed
- Quick and easy to vacuum

[Watch](#) or [download](#) the cleaning instructions.