

Frontrunner XT

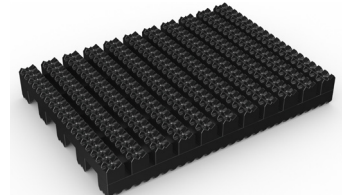


Extra slip-resistant entrance matting perfect for high traffic exterior and interior areas.



Frontrunner XT is a heavy-duty entrance mat designed to combat substantial amounts of dirt and large debris.

Its deep-etched tread scrapes shoes and wheels clean, while the open grid traps and collects the debris, preventing it from coming inside. This extra slip resistant mat is ideal for walkways like hardwood decking and bridges that tend to get slippery in wet weather. You can use Frontrunner XT inside and outside, or combine with entrance matting specifically designed for high traffic inside areas, like Frontrunner Plus.



Features:



Diamond cut pattern



Two layer open-grid construction



Close mesh grid



Made from flexible PVC



Comes in 10m (33') rolls



Benefits:



Certified slip resistant (DIN 51130:R12)



Excellent drainage (DIN 51130:V10)



Wheel-and-heel proof



Easy to cut on site, contours to uneven surfaces



Seamless installation



Plastic Extruders Ltd.

Russell Gardens, Wickford
Essex, SS11 8DN
+44 (0) 1268 571 116

UK + USA manufactured
matting products:
plastexmatting.com



Standard sizes:

Product	Fronrunner XT	Low Profile
Height	14mm (9/16")	10.5mm (13/32")
Standard roll options	10 x 0.6m (33' x 2')	10 x 0.6m (33' x 2')
	10 x 0.91m (33' x 3')	10 x 0.91m (33' x 3')
	5 x 1.2m (16'6" x 4')	5 x 1.2m (16'6" x 4')
Weight	10.5kg/m ² (2lbs/sq.ft)	8.7kg/m ² (1.8lbs/sq.ft)

Tolerances:

	Height (+/- 0.5mm)	Length (0+0.3mm)	Width (0+2mm)	
Fronrunner XT	14 mm	10 m	60 cm	91 cm
	14 mm	5 m	120 cm	
Fronrunner XT Low Profile	10.5 mm	10 m	60 cm	91 cm
	10.5 mm	5 m	120 cm	

All dimensions are nominal

Technical information:

Acoustic	Excellent sound absorption
Chemical	Resistant to most acids, alkalines and oils. You can read more about specific chemical resistances by downloading this information sheet
Composition	Flexible Polyvinyl Chloride (PVC)
Environment	Fronrunner XT is 100% recyclable. We don't use any substances included in the SVHC list under REACH in any of our matting products.
Fire	EN ISO 13501-1:2007-Bfl-S1, ASTM E648, Class I
Reversion	Thermoplastic shrinkage can result in size reductions up to 2%. This may be accelerated in hot environments. You can read more about the causes of shrinkage by downloading this information sheet .
Slip resistance	DIN 51130:R12,V10 DIN 51130:R11,V10 (Fronrunner XT Low Profile)
Thermal	Designed to function at temperatures from -23°C and up to +60°C. Slight size variation may occur at temperature extremes.
UV light	Resistant to PVC degradation
Warranty	Fronrunner XT: four years Fronrunner XT Low Profile: two years Visit our policies page for more information about warranties

Colours:



Black



Dark grey



Oxford blue

More colours
available
upon request

Installation:

Frontrunner XT's one-piece construction means installation is simple:

- No special tools or previous site visits
- Integrates with all internal floor coverings
- Fits with different well depths
- Contours to the floor

[Watch](#) or download the [recessed entrance matting installation instructions](#) and the [surface-mounted installation instructions](#)

Cleaning:

Keeping Frontrunner XT looking good is easy:

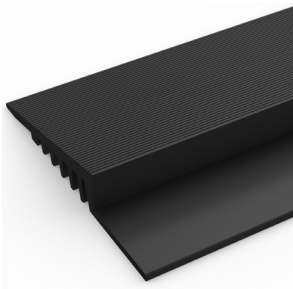
- Reduces cleaning intervals
- Simply roll or lift to clean
- No special tools needed
- Easy to vacuum or clean with a pressure hose

[Watch](#) or [download](#) the the cleaning instructions.

Ancillaries:

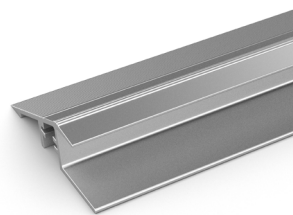
> For surface mounted installations

PVC edging (H: 14mm, W: 60mm)



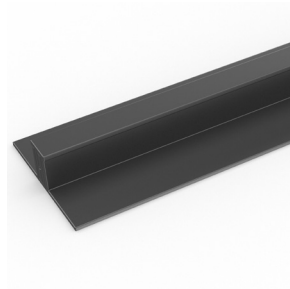
Supplied in rolls of 10.1m (33') length with cold welding paste. Comes in black, dark grey, dark brown, holly green, Oxford blue, yellow. Size: 14mm x 60mm x 10.1m (9/16" x 2 1/2" x 33')

Aluminium edging (H: 14mm)



Supplied in sections of 2m (6'6") length with fixing screws and plugs. Comes in anodised aluminium and powder coated yellow. Size: 14mm x 45mm x 2m (9/16" x 1 13/16" x 6'6")

PVC snap track (H: 14mm)



Two-part snap track that can be welded together to join rolls end-to-end or side-to-side to cover large areas. Supplied with cold welding paste. Comes in black and dark grey. Size: 14mm x 2.5m (9/16" x 8'2").

Connector clips: side-to-side (H: 14mm)



For joining sections of low profile matting together side-to-side. Supplied in packs of 10

Data sheet

Ancillaries:

> For recessed installations

R frame (H: 14mm)



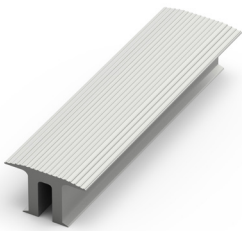
You'll need these to secure the matting on the left-to-right edges. Supplied in sections of 3m (10') length with fixing screws and plugs. Comes in anodised aluminium, powder coated dark grey and black. Size: 14mm x 12mm (9/16" x 15/32")

J frame (H: 18mm)



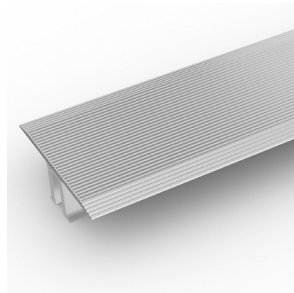
Installing Frontrunner against a wall? You'll need a J frame to secure the matting on the left-to-right edges. Supplied in sections of 3m (10') length with fixing screws and plugs. Comes in dark grey and black. Size: 18mm x 60mm (11/16" x 2 3/8")

T frame (H: 14mm)



You can use a T frame (27mm) to divide the matting into sections left-to-right – this makes it easier to lift and clean. Supplied in sections of 3m (10') length with fixing screws and plugs. Comes in anodised aluminium, powder coated dark grey and black

TL frame (H: 14mm)



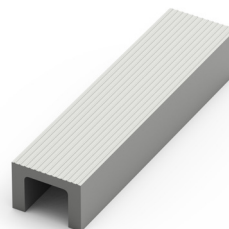
You can use a T/L frame (55mm) to divide the matting into sections left-to-right – this makes it easier to lift and clean. Supplied in sections of 3m (10') length with fixing screws and plugs. Comes in anodised aluminium

H section (H: 14mm)



If the front-to-back dimension of the mat well is greater than the final width of your matting, you may need a H section to secure the different sections together. Supplied in sections of 3m (10') length, with fixing screws and plugs. Comes in black, with mat insert colour specified. Size: 14mm x 13mm (9/16 x 1/2")

U section (H: 14mm)



If the front-to-back dimension of the mat well is greater than the final width of your matting, you may need a U section to secure the different sections together. Supplied in sections of 3m (10') length, with fixing screws and plugs. Comes in anodised aluminium, powder coated dark grey and black. Size: 14mm x 19mm (9/16" x 3/4")

L frame (H: 15mm)

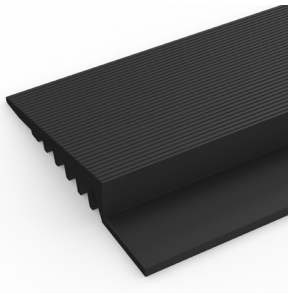


Installing around a circular door or non rectangular space? You'll need a L frame to secure the matting. Size: 15mm x 2.7m length (5/8" x 8')

Ancillaries:

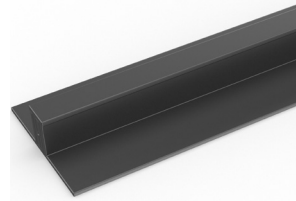
> For surface mounted installations: Low profile

PVC edging (H: 10mm, W: 50mm)



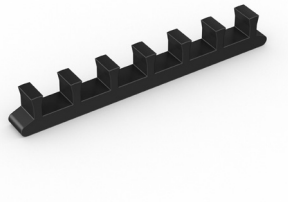
Supplied in rolls of 10.1m (33') length with cold welding paste. Comes in black and dark grey. Size: 10mm x 50mm x 10.1m (3/8" x 2" x 33')

PVC snap track (H: 10.5mm)



Two-part snap track that can be welded together to join rolls end-to-end or side-to-side to cover large areas. Supplied with cold welding paste. Comes in dark grey. Size: 10.5mm x 2.5m (13/32" x 8'2")

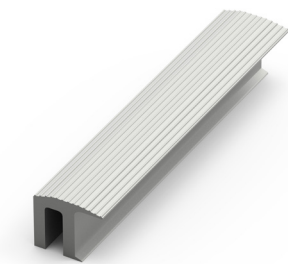
Connector clips: side-to-side (H: 10mm)



For joining sections of low profile matting together side-to-side. Supplied in packs of 10

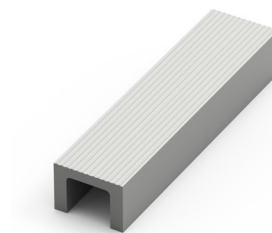
> For surface mounted installations: Low profile

R frame (H: 10mm)



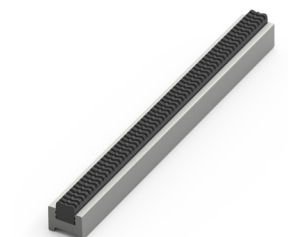
You'll need these to secure the matting on the left-to-right edges. Supplied in sections of 3m (10') length with fixing screws and plugs. Comes in anodised aluminium, powder coated dark grey and black. Size: 10mm x 12mm (3/8" x 15/32")

U section (H: 10mm)



If the front-to-back dimension of the mat well is greater than the final width of your matting, you may need a U section to secure the different sections together. Supplied in sections of 3m (10') length, with fixing screws and plugs. Comes in anodised aluminium, powder coated dark grey and black. Size: 10mm x 18mm (3/8" x 11/16")

H section (H: 10mm)



If the front-to-back dimension of the mat well is greater than the final width of your matting, you may need a H section to secure the different sections together. Supplied in sections of 3m (10') length, with fixing screws and plugs. Comes in black, with mat insert colour specified. Size: 10mm x 13mm (3/8" x 1/2")

Z frame (H: 10mm)



Installing matting next to ceramic tiles? You'll need a Z frame to secure the matting. Supplied in sections of 3.6m (11') length with fixing screws and plugs. Comes in anodised aluminium, powder coated dark grey and black. Size: 10mm x 24mm (3/8" x 15/16")